

Purif-pack[®]

Spherical cartridge

Carry out purification using spherical silica,
differing from conventional products!

NH60

ODS



SI60

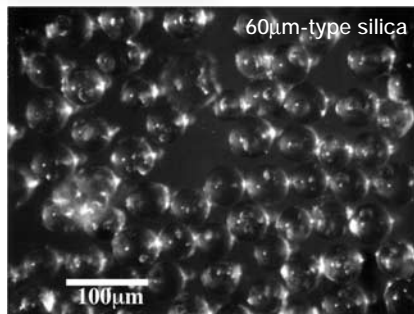
SI15



SI30

SI Series

Spherical silica gel sized 15µm, 30µm and 60µm are filled
Wide product range with sizes from 20 to 60, 200 and 400ml!



Features of spherical silica

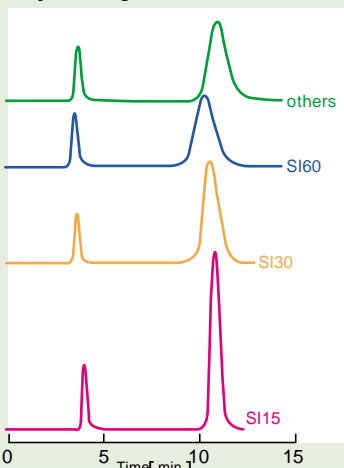
- Samples are easily charged into cartridges
- Pressure usually does not rise during batch off
- Distribution of particle sizes is narrow
- ø15 silica gel improves performance so dramatically that separation power is close to that of HPLC cartridge

New



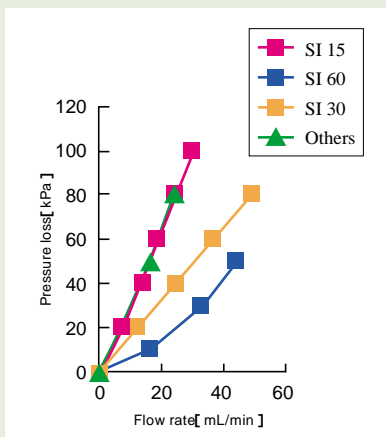
*Size400 is also available

Comparison of chromatograms by cartridges

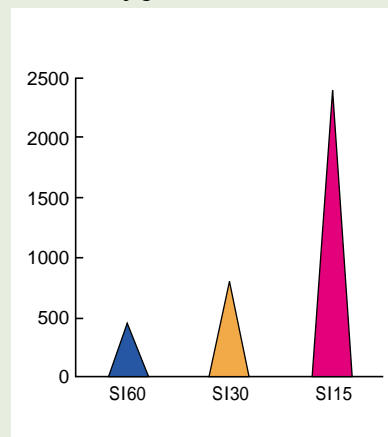


Measurement conditions
Mobile phase:10%AcOEt/n-Hexane
Column:SIZE60
Samples:1mL(Benzene,Dibutylphthalate in Hexane)

Flow rate and pressure loss



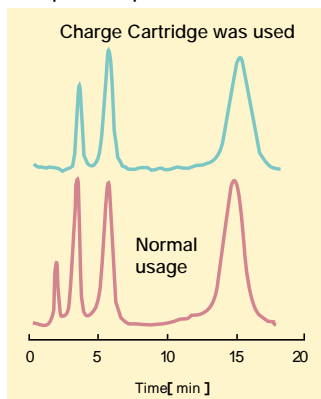
Comparison of theoretical plate number by grades



NEW! Charge SI
Cartridge system for sample charging

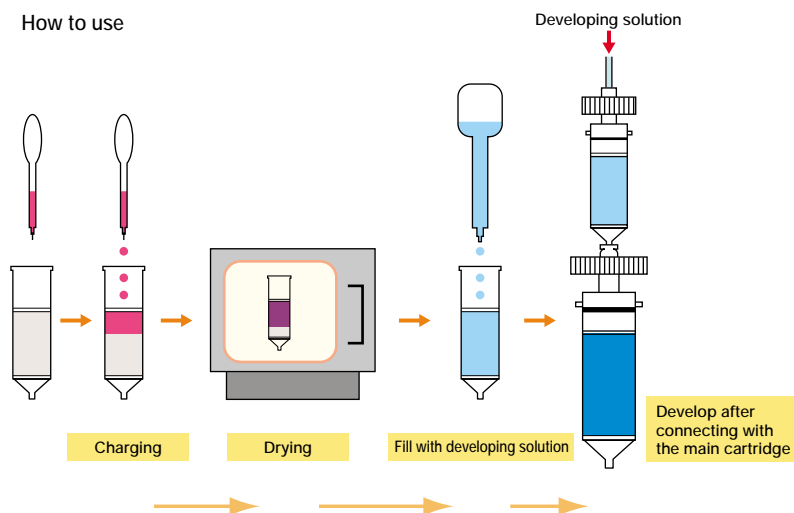
Samples should be loaded after dissolving into developing solvent or a solvent of lower polarity. Some samples may be dissolvable only into developing solvent. Moreover, the so-called "drop out phenomenon" has actually occurred in which samples are eluted along with developing solution when the polarity of sample adjustment solvent used was higher than that of the developing solvent, thereby preventing satisfactory separation. To resolve the problem and to enable preparation of satisfactory samples, a new product Charge SI has been released.

Separation power



Original data
Charge Cartridge

How to use



When Charge SI is used, separation power would not deteriorate and could even improve even when acetic ether and other adjustment solvents of high polarity was used.

Measurement conditions
Mobile phase :10%AcOEt / n-Hexane
Cartridge :Purif-Pack SI60µm SIZE:60
Charge SI :SIZE:20
Samples
1. Benzene
2. Dioctyl phthalate
3. Dibutyl phthalate
4. Dimethyl phthalate Solved into acetic ether

Injected sample amount and adjustment solvent
Original data: 1mL of hexane When Charge SI was used: 5mL of acetic ether

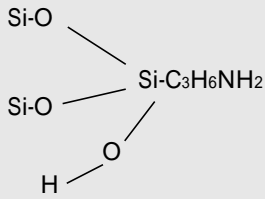
Normal Charge Cartridge products		
Sample	Theoretical plate number N	Theoretical plate number N
DOP	389	225
DBP	355	306
DMP	447	433

Note) As benzene is volatile, it disappeared along with the solvent while drying

NH Series

Compatible for separating basic substances

Surface of aminosilica



Please use NH cartridge modified with aminopropyl[H₂NC₃H₆Si(-R)₃] for basic substances that are difficult to separate with Si.

*NH TLC is also available

Test condition settings

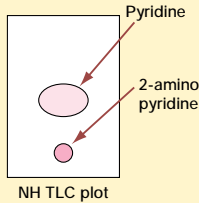
Cartridge :NH60 SIZE60 cartridge
 Sample :Pyridine/ 2-aminopyridine diluted by toluene
 Batch off mode :Peak
 Flow rate :30ml/min
 Mobile phase solvent A:hexane B:acetic ether

Results

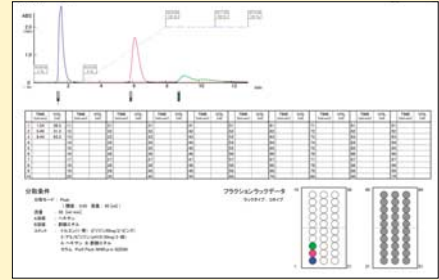
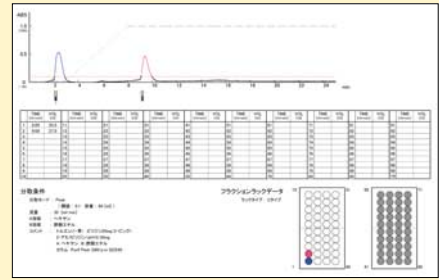
Refer to batch off data on separate sheet

Fraction
 No.1: Toluene
 No.2: Pyridine
 No.3: 2-aminopyridine

TLC Rf value
 Hexane: Acetic ether=1:1
 Pyridine 0.415
 2-aminopyridine 0.154



Batch off data



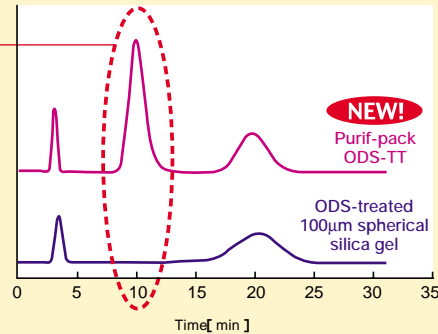
ODS Series

- Compatible with end-capping treatment
- Compatible with separation of basic substance (pyridine)

Pyridine does not stay inside of the cartridge as there is no remnant silanol group

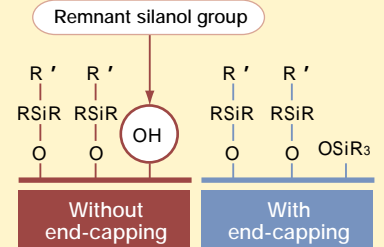
Conditions for separation
 Cartridge size :4.6 × 250mm
 Filler :Purif-pack ODS-TT (with end-capping)
 ODS-treated 100μm silica gel (without end-capping)
 Mobile phase :Acetonitrile-water (15:85)
 Flow rate :1mL / min
 Measurement wavelength :UV254nm
 Samples : Uracil Pyridine Phenol

Separation chart using ODS cartridge



End-capping treatment and silanol group

Silanol group remaining on the surface of silica gel is masked by end-capping, thereby preventing adsorption of basic and other substances



Cartridge system



Pressure controller (MPa)



Injector



Clamp



Seal adapter



Stand set



Bottle-type reservoir

Product code	Product name	Model
CAS00015	Syringe needles (10 needles)	CCN-10
CAS00016	Injector	CCI-1
CAS00021	For size 20 clamp	CCK-20
CAS00022	For size 60 clamp	CCK-60
CAS00023	For size 200 clamp	CCK-200
CAS00024	Connecting tube for detector	CCT-1
CAS00025	Bottle-type reservoir 1L	CCRB-10
CAS00026	Bottle-type reservoir 2L	CCRB-20
CAS00027	Pressure controller	FB-2
CAS00212	Cartridge stand	CCSD-M

Cartridge [Purif-pack]

Product code	Product name		Content	Remarks
CAP00351	Purif-pack	SI SIZE:20	1 box with 30 cartridges	Spherical silica 10g
CAP00353	Purif-pack	SI SIZE:60	1 box with 20 cartridges	Spherical silica 30g
CAP00354	Purif-pack	SI SIZE:200	1 box with 20 cartridges	Spherical silica 100g
CAP00355	Purif-pack	SI SIZE:400	1 box with 15 cartridges	Spherical silica 200g
CAP00550	Purif-pack	SI (30µm) SIZE:20	1 box with 30 cartridges	Spherical silica 10g
CAP00356	Purif-pack	SI (30µm) SIZE:60	1 box with 20 cartridges	Spherical silica 30g
CAP00357	Purif-pack	SI (30µm) SIZE:200	1 box with 20 cartridges	Spherical silica 100g
CAP00551	Purif-pack	SI (30µm) SIZE:400	1 box with 15 cartridges	Spherical silica 200g
CAP00650	Purif-pack	SI (15µm) SIZE:20	1 box with 10 cartridges	Spherical silica 10g
CAP00358	Purif-pack	SI (15µm) SIZE:60	1 box with 10 cartridges	Spherical silica 30g
CAP00359	Purif-pack	NH SIZE:20	1 box with 30 cartridges	Spherical NH silica 10g
CAP00360	Purif-pack	NH SIZE:60	1 box with 20 cartridges	Spherical NH silica 30g
CAP00361	Purif-pack	NH SIZE:200	1 box with 20 cartridges	Spherical NH silica 100g
CAP00362	Purif-pack	NH SIZE:400	1 box with 15 cartridges	Spherical NH silica 200g
CAP00363	Purif-pack	ODS SIZE:20 (TT-end-capping)	1 box with 30 cartridges	Spherical ODS silica 10g
CAP00364	Purif-pack	ODS SIZE:60 (TT-end-capping)	1 box with 20 cartridges	Spherical ODS silica 30g
CAP00365	Purif-pack	ODS SIZE:200 (TT-end-capping)	1 box with 20 cartridges	Spherical ODS silica 100g
CAP00366	Purif-pack	ODS SIZE:400 (TT-end-capping)	1 box with 15 cartridges	Spherical ODS silica 200g
CAP00661	Purif-pack	NH SIZE:20	1 box with 10 cartridges	Spherical ODS silica(in portions)10g
CAP00662	Purif-pack	NH SIZE:60	1 box with 10 cartridges	Spherical ODS silica(in portions)30g
CAP00663	Purif-pack	NH SIZE:200	1 box with 10 cartridges	Spherical ODS silica(in portions)100g
CAP00664	Purif-pack	NH SIZE:400	1 box with 5 cartridges	Spherical ODS silica(in portions)200g
CAP00665	Purif-pack	ODS SIZE:20 (TT-end-capping)	1 box with 10 cartridges	Spherical ODS silica(in portions)10g
CAP00666	Purif-pack	ODS SIZE:60 (TT-end-capping)	1 box with 10 cartridges	Spherical ODS silica(in portions)30g
CAP00667	Purif-pack	ODS SIZE:200 (TT-end-capping)	1 box with 2 cartridges	Spherical ODS silica(in portions)100g
CAP00668	Purif-pack	ODS SIZE:400 (TT-end-capping)	1 box with 2 cartridges	Spherical ODS silica(in portions)200g

Sample charge cartridge

Product code	Product name		Content	Remarks
CAP00435	Purif-pack	Charge SI SIZE:20	1 box with 30 cartridges	Spherical silica 10g
CAP00436	Purif-pack	Charge SI SIZE:60	1 box with 20 cartridges	Spherical silica 30g

Empty cartridge

Product code	Product name	Content
CAP00369	Empty cartridge SIZE:20	1 box with 100 cartridges
CAP00371	Empty cartridge SIZE:60	1 box with 100 cartridges
CAP00372	Empty cartridge SIZE:200	1 box with 100 cartridges
CAP00373	Empty cartridge SIZE:400	1 box with 100 cartridges

Frits

Product code	Product name	Content
CAP00382	Frit20 (For size 20)	1 box with 100 sheets
CAP00384	Frit27 (For size 60)	1 box with 100 sheets
CAP00385	Frit46.5 (For both sizes 200/400)	1 box with 100 sheets

Seal adapter

Product code	Product name	Content
CAP00024	For size 20 seal adapter	1 adapter
CAP00394	For size 60 seal adapter	1 adapter
CAP00395	For size 200 seal adapter	1 adapter
CAP00271	For size 20 seal adapter (Leur injection included)	1 adapter
CAP00272	For size 60 seal adapter (Leur injection included)	1 adapter
CAP00273	For size 200 seal adapter (Leur injection included)	1 adapter

Cartridge holder

Product code	Product name	Content
CAP00055	For size 20 cartridge holder	1 holder
CAP00071	For size 60 cartridge holder	1 holder
CAP00072	For size 200 cartridge holder	1 holder

*Shipment charges, installation charges, site adjustment charges and consumption tax are not included in the prices indicated.
*The specifications and designs are subject to change without notice; please be sure to check with us when placing an order.



MORITEX CORPORATION

1-3-3 Azamino-minami, Aoba-ku, Yokohama, 225-0012, Japan
Phone +81-(0)45-913-5800 Fax +81-(0)45-913-5805
URL : <http://www.moritex.co.jp/> Email : bio@moritex.co.jp

MORITEX U.S.A., INC.

6862 Santa Teresa Blvd., San Jose, CA 95119 U.S.A.
Phone +1-408-363-2100 Fax +1-408-363-9980
URL : <http://www.moritexusa.com/> Email : sales@moritexusa.com

MORITEX Europe Ltd.

14 Signet Court, Swanns Road, Cambridge CB5 8LA, U.K.
Phone +44-(0)1223-301148 Fax +44-(0)1223-301149
URL : <http://www.moritex.com/> Email : info@moritex.com

MORITEX Hong Kong Co., Ltd.

3F Richwealth Industrial Bldg., 77-87 Wang Lung Street Tsuen Wan, New Territories, Hong Kong
Phone +852-2439-0968 Fax +852-2439-0377
URL : <http://www.moritex.com/> Email : moritex@netvigator.com